



BMH40A Material Handler



KEY SPECS

85,400 LB
Operating Weight

52'
Maximum Reach

223HP
Engine Horsepower

20KW
Generator Rating

UP TO 19'
Cab Riser Visibility

Built Right. Here.

The BMH40A from Brandt is designed and manufactured in North America and purpose built for the scrap material handling industry. This world-class heavy lifter delivers unmatched productivity with 24/7/365 support plus easy-to-find components for increased uptime.

① Improved Productivity

With proven Deere components and rapid cycle times, the BMH40A allows you to do more in less time.

- Final Tier 4 PowerTech PSS 6.8L engine delivers net rated power of 223 hp at 1900 rpm.
- Market-leading swing speed and torque of 66,749 ft-lb maximize cycle times.
- Electric-over-hydraulic (EH) system provides ideal flow for maximum efficiency and productivity.

② Increased Uptime

Second-to-none service and support paired with easy-to-maintain components means more uptime from your machine.

- Automatic reversing, cool-on-demand fan intervals keep the radiators free of debris.
- Excellent operator access and egress and localized ground access simplify daily maintenance.
- Superior service & Deere support paired with US and Canadian parts warehouses means more machine uptime.

③ Lower Operating Costs

The energy recovery system and auto-idle/shutdown maximize fuel efficiency. They also contribute to reduced cost of operation and wear of machine components.

- Nitrogen-filled cylinder and reservoir counteracts boom and arm weight to reduce fuel consumption.
- Auto-idle and auto-shutdown save fuel when the machine is inactive.
- Power modes adjust engine settings, allowing a focus on fuel economy, productivity, or both.

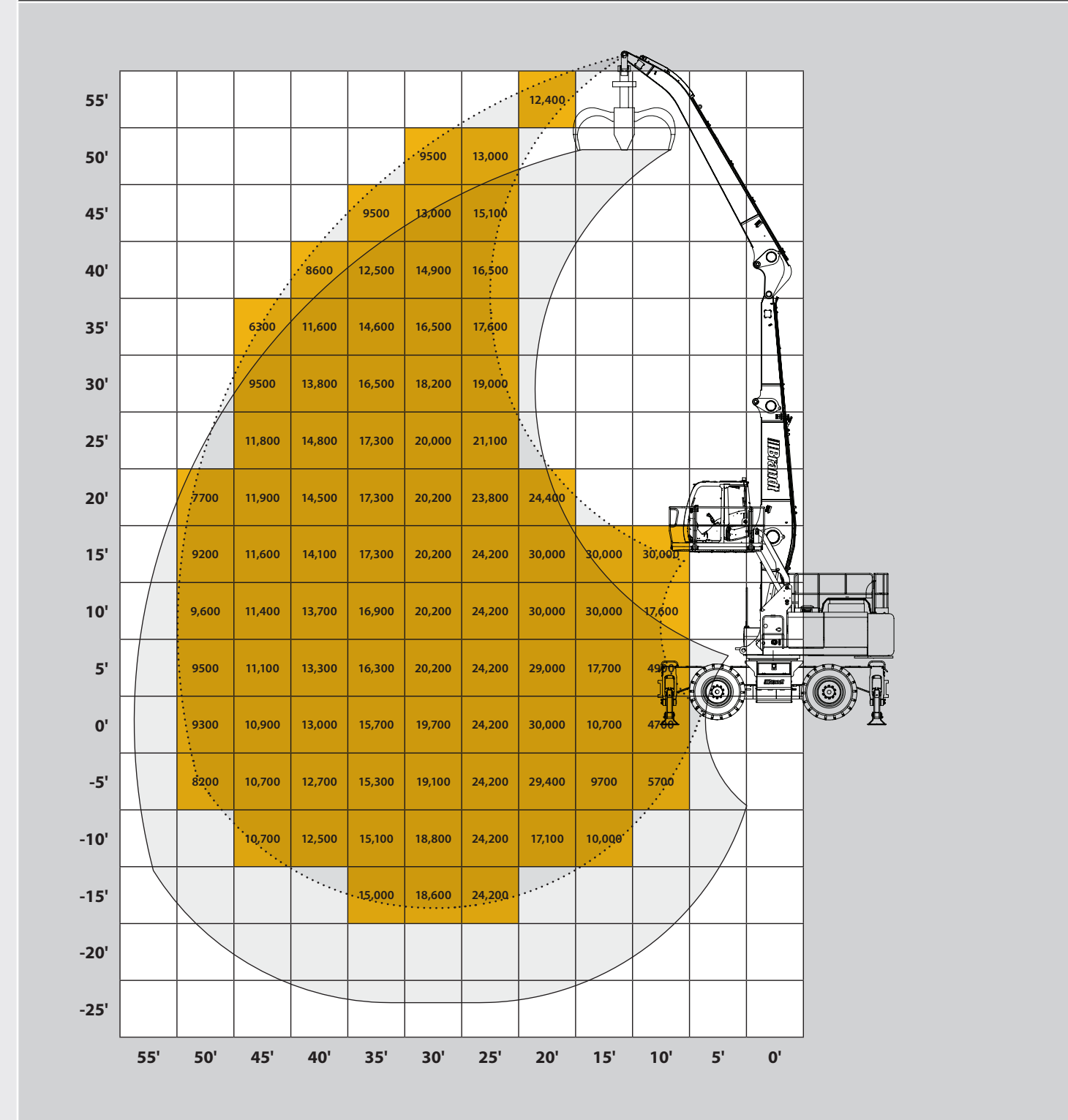
Powerful Value. **Delivered.**



BMH40A MATERIAL HANDLER SPECIFICATIONS

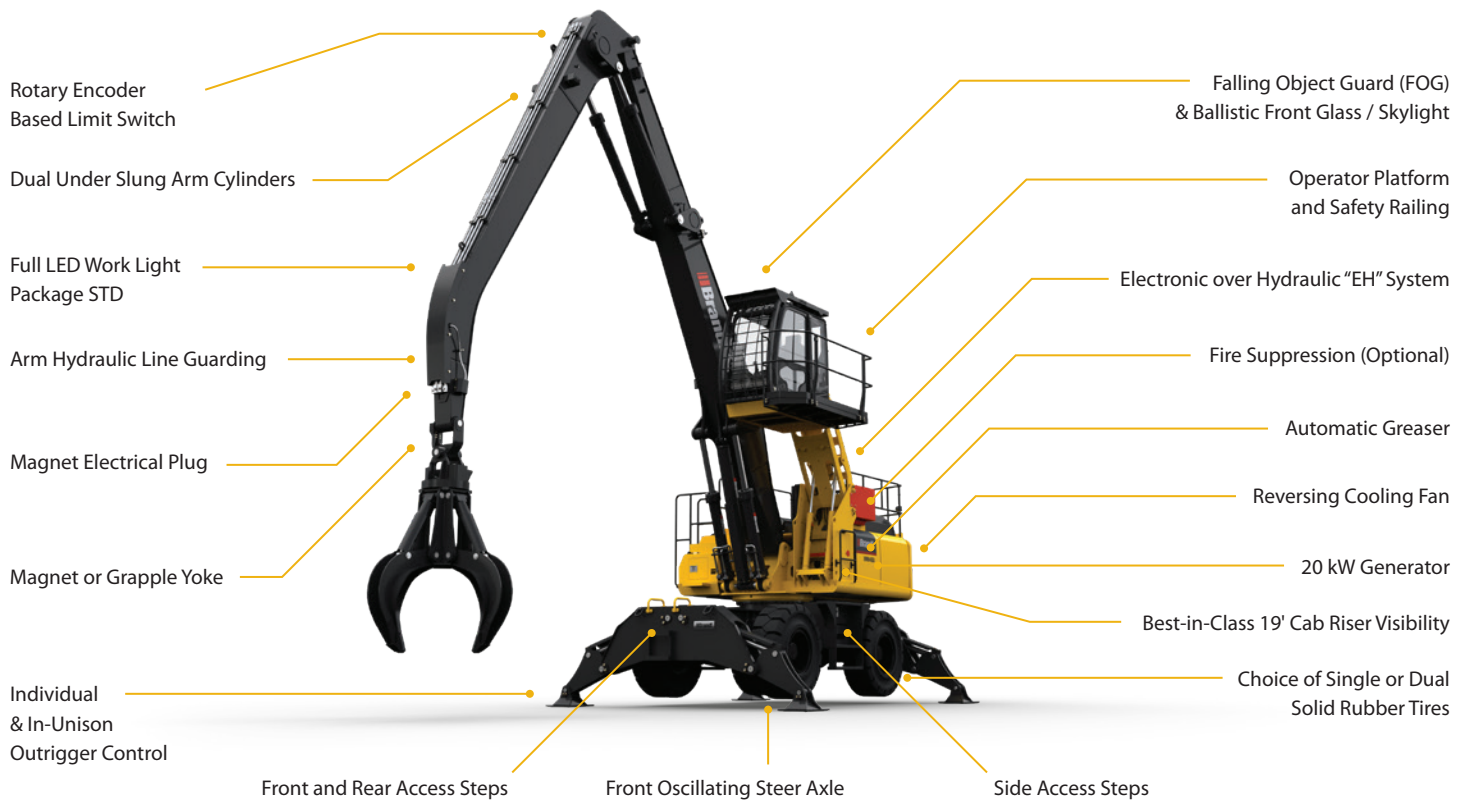
OPERATING WEIGHT	
16m front, full fuel tank, operator, single solid tire	85,400 lb (38,736 kg)
WORKING FRONT	
Maximum Reach	52' (16m)
ENGINE	
Model	John Deere PowerTech™ PSS 6.8L, 6068HT107
Non-Road Emission Standard	EPA Final Tier 4/EU Stage IV
Net Rated Power (ISO 9249)	223 hp (166 kW) at 1900 rpm
Aspiration	Series turbocharged, air-to-air charge-air cooler
GENERATOR	
Rating	20 kW
Voltage	220 V
Drive	Hydraulic
COOLING	
System	Reversing cool-on-demand hydraulic-driven, suction-type fan with remote-mounted drive
HYDRAULIC SYSTEM <small>Closed center, electronic over hydraulic</small>	
Main Pumps	2 variable-displacement pumps
Maximum Rated Flow	62.3 gpm (236 L/m) x 2
Maximum Pressure	5200 psi (35,852 kPa)
TRAVEL / UNDERCARRIAGE <small>Rubber tired, all-wheel drive, variable displacement motor with dual stage power shift transmission</small>	
Travel Speed	1st 0 – 4.5 mph (0 – 7 km/h) / 2nd 0 – 13 mph (0 – 20 km/h)
Tires	Duals: 8 X 14.00-24 / Singles: 4 X 20.5-25
Gradeability	36%
Steering	Joystick Steering
Front Axle	Oscillating with auto hydraulic lock
Rear Axle	Fixed
Parking Brake	Disc, spring actuated hydraulic release
Service Brake	Multidisc, wet
SWING SYSTEM	
Swing Speed	8 RPM
Torque	66,749 lb-ft (90 500 Nm)
ELECTRICAL	
Battery Capacity	1000 CCA
Alternator Rating	100 amp
LED Work Lights	11 total: 2 on boom, 2 on arm, 2 FR cab, 1 RR cab, 1 FR of upper house near DEF, 2 RR of upperhouse, 1 under hood
REFILL CAPACITIES	
Fuel Tank	136 gal (514 L)
Diesel Exhaust Fluid (DEF) Tank	9.2 gal (35 L)
Cooling System	9.5 gal (36 L)
Engine Oil with Filter	5 gal (20.5 L)
Hydraulic Tank	41 gal (156 L)

LOAD CHART



Attachment weight must be deducted from the values to get lift capacity, as values represent load on yoke.
 Values are in lbs and conform to ISO 10567 and ASME B30.25, and do not exceed 75% tipping and 87% hydraulic capacity on firm level ground.
 Values are with both outriggers down on firm level ground, and can be slewed to 360°.
 Values are based on the machine using nitrogen system.

BMH40A MATERIAL HANDLER FEATURES



Operator Comfort

The standard air ride seat is adjustable with both heating and cooling options to keep operators comfortable for the entire shift. Machine monitoring controls, climate controls, and audio buttons are all easily accessible and require minimal operator hand movements.

Visibility

The hydraulic cab riser offers a 19' operator view, while rear and boom side cameras help eliminate blind spots. An additional camera can also be installed. Joystick steering comes standard, eliminating the steering column, increasing operator visibility, and improving overall operator leg room.

Access and Egress

The standard full-perimeter handrails on top of the machine protect operators while performing daily maintenance tasks. Three-point contact can be maintained by operators while accessing both the upper house and the undercarriage from the ground.

FOG & Ballistic Glass

Polycarbonate front window and skylight is included standard, along with the front window/top of cab falling object guarding system (FOGS) that protects the operator and cab from large debris/material. Optional upgrades include shatter-proof windows on boom-side and driver-side.

Mobility

A wheeled undercarriage balances machine mobility and stability. The all-wheel drive, 2-speed transmission provides top speeds of up to 11 miles (18 km) an hour. Full drivetrain guarding comes standard and protects critical components, while the two swing-away center-guards allow easy maintenance access.

Reversing Cooling Fan

The cool-on-demand hydraulic reversing fan has programmed automatic reversing intervals, as well as manual activation, which back-blows cooler cores to reduce debris buildup. Additionally, the smaller radiators are swing out to allow greater access to all cooling cores. This design also ensures maximum fuel efficiency, reduced noise levels, and faster engine warm up.

Fire Suppression

Optional powder fire suppression system automatically activates when flame is detected in engine bay. It can also be manually activated from the ground or in the cab.

Rotary Encoder Limit Switches

Rotary encoders act as limit switches to constantly monitor boom/arm placement and prevent the operator from accidentally contacting the cab with the attachment. When the arm enters the Cab Contact Zone, hydraulic function automatically reduces to approximately 60% of operating speed, allowing safe and controlled movement of the attachment out of the cab area.

For more information:
Call us at **1-888-227-2638**
Email us at sales@brandt.ca
Or visit us at brandt.ca

© Brandt Industries Ltd. All rights reserved. The Brandt name and logo are trademarks of Brandt Industries Ltd., used under license. All product information and specifications are subject to change without notification. Printed in Canada. Revised 04/2024-CU