

# VALUES

SEPTEMBER 2021

OFFERS EXPIRE SEPTEMBER 30, 2021

**Brandt**



## ValPar Premium Lighting

**10% off**

- Driving lights, auxiliary lights, work lights, and off-road lights
- Customizable solutions to suit your application
- Made in the USA

**ValPar**

BPSM21-51

## Genuine John Deere Filters

Protect your equipment.

**15% off**

- Expertly designed to protect and extend the life of your machine
- Boost uptime and productivity while lowering your daily operating costs
- Made to exact specification to fit John Deere and other all-makes applications



JOHN DEERE

BPSM21-52



## Ditch Witch® Omni Bits

**10% off**

- Forward-facing cutting structure eliminates blunt nose for more productive drilling
- Built to take on the widest range of soils, delivering more versatility to every job

**Ditch Witch**

BPSM21-53



## John Deere Equipment ReLife

Extend the life of your machine with:

- Thorough machine inspection by a certified technician
- Complete set of John Deere Reman powertrain components
- John Deere Powertrain ReLife Plus Warranty



JOHN DEERE

BPSM21-54

## John Deere Certified Techs

We keep you running.

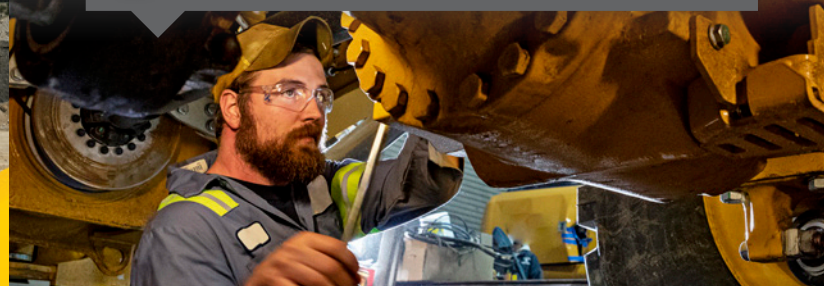
**SPECIAL PRICING**  
ON LABOUR RATES

- Our techs diagnose and repair your equipment quickly and efficiently, maximizing your uptime
- Buy a block, save a bundle – exclusive tech time at reduced labour rates!



JOHN DEERE

BPSM21-55







**PROACTIVE™**  
MAINTENANCE

## Get More From Your Equipment.

Maximize your productivity and profitability with Brandt's ProActive™ Maintenance program. Our certified technicians perform scheduled onsite equipment maintenance and will follow up to address any service needs, warranty compliance, and more; all to optimize your equipment uptime.

- ✓ Avoid costly emergency repairs
- ✓ Reduce operating costs
- ✓ Promote long component life and more

Call 1-844-776-2288 or email [ProActive@brandt.ca](mailto:ProActive@brandt.ca) to sign up.

## Current stock for **skidders**

Parts available for all models  
and generations!

### Refurbished:

Axles, control valves, torque converters, and more...



### Used:

Axle shafts, grapples, engine side shields, and more...



### Aftermarket:

Steering cylinders, steering bumpers, cab door struts, and more...



**1-877-685-4886**

E-mail: [usedparts@brandt.ca](mailto:usedparts@brandt.ca) / Inventory: [brandt.ca/ValueParts](http://brandt.ca/ValueParts)

**Value**  
**PARTS**