



FL90

Big on performance and equally capable in many felling applications, the FL90 directional felling head offers strength, agility and smarts. It makes no compromises with enhanced durability, a large capacity and intelligence to work fast. Simply put, it's perfectly sized for productivity.

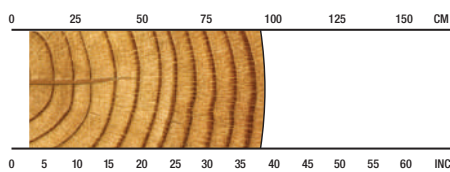
OVERVIEW

Thinnings, steep slope, shovel logging/hoe-chucking, topping, storm damage, clean-up.

APPLICATIONS

Shovel logging
Late or final thinnings/clear felling
Topping
Storm damage
Step slope

RECOMMENDED RANGE



8-96 cm / 3.1-37.8 in.

SPECS



2265 kg / 4,993 lb.
Net Weight



35 MPa / 5,076 psi
Max Hydraulic Pressure



1300 mm / 51.2 in
Max Grapple Opening



960 mm / 38 in.
Maximum Sawing Capacity



20+ metric ton
Carrier Size

FL90 FELLING HEAD

SPECIFICATIONS

DIMENSIONS	
Height, to boom pin (mm/in.)	1847 / 73.7
Width, arms open (mm/in.)	1780 / 70
Depth, arms open (mm/in.)	1641 / 64.6
WEIGHT	
Net weight (kg/lb.)	2265 / 4,993
GRAPPLE ARMS	
Timing, synchronizing links	1
Maximum opening (mm/in.)	1300 / 51.2
Minimum closed diameter (mm/in.)	80 / 3.15
Grapple capacity (m ² /ft ²)	0.45 / 4.8
CUTTING	
Saw type and pitch	3/4" auto tension
Saw bar (mm/in.)	1016, 1118 / 40, 44
Saw motor	50cc std; 63cc option
Chain type (in.)	3/4"
Maximum cut (mm/in.)	960 / 38
Chain oil capacity (L/gal.)	17 / 4.5
CARRIER RANGE	
Tracked (metric tons)	20+

SPECIFICATIONS

HYDRAULIC SYSTEM	
Maximum operating pressure (MPa/psi)	35 / 5,076
Maximum pump capacity (L/min.,gal./min.)	360 / 95
CONTROL & MEASURING SYSTEM	
Standard for Forest machine Data and Communication	TimberRite X-26
DBH measure	StanForD 2007 / 2010
Saw bar control	
Saw limiting	
OPTIONAL CONFIGURATIONS	
Second rotator motor	
63cc main saw motor	
Second diameter sensor	
Stump treatment	
Snow hole guarding	
Filter kit	
Work statistics	
Uptime kit	
Toolbox	
Control and measuring system - mapping	
Control and measuring system - cellular/satellite connectivity	

