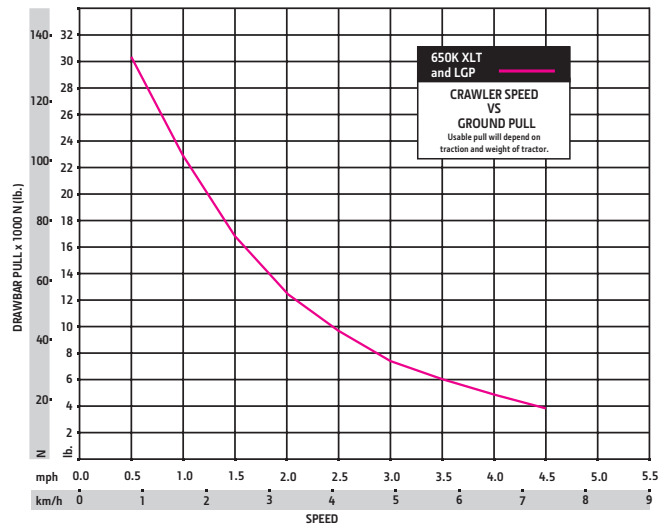


# 650K



<b>Engine</b>	<b>650K XLT / 650K LGP</b>
<b>Blade Type</b>	<b>Power Angle Tilt (PAT)</b>
Manufacturer and Model	John Deere PowerTech™ PWX 4045
Non-Road Emissions Standard	EPA Interim Tier 4/EU Stage IIIB
Displacement	4.5 L (276 cu. in.)
SAE Net Rated Power	75 kW (101 hp) at 2,200 rpm
Net Peak Torque	448 Nm (330 lb.-ft.) at 1,200 rpm
Aspiration	Turbocharged with charge air cooler
Air Cleaner	Vacuum-aspirated dual-element dry canister
Slope Operation, Maximum Angle	45-deg. fore-aft / 30-deg. side slope
<b>Cooling</b>	
Type	Variable-speed suction fan with optional reversing feature
Engine Coolant Rating	-37 deg. C (-34 deg. F)
Engine Radiator	10 fins per in.
<b>Powertrain</b>	
<b>Transmission</b>	Automatic, dual-path, hydrostatic drive; load-sensing feature automatically adjusts speed and power to match changing load conditions; each individually controlled track is powered by a variable-displacement piston pump and 2-speed motor combination; ground-speed selection buttons on single-lever steering and direction control; independently selectable reverse speed ratios of 100%, 115%, or 130% of forward ground speed; decelerator pedal controls ground speed to stop
System Relief Pressure	44 470 kPa (6,450 psi)
<b>Travel Speeds</b>	
Forward and Reverse	8.0 km/h (5.0 mph)
Maximum (optional)	9.7 km/h (6.0 mph)
<b>Steering</b>	Single-lever steering, speed, direction control, and counterrotation; full power turns and infinitely variable track speeds provide unlimited maneuverability and optimum control; hydrostatic steering eliminates steering clutches and brakes
<b>Final Drives</b>	Triple-reduction final drives mounted independently of track frames and dozer push frames for isolation from shock loads
Total Ratio	52.13 to 1
<b>Drawbar Pull</b>	
Maximum	148 kN (33,600 lb.)
At 1.9 km/h (1.2 mph)	98 kN (22,000 lb.)
At 3.2 km/h (2.0 mph)	62 kN (14,000 lb.)
<b>Brakes</b>	
Service	Hydrostatic (dynamic) braking stops the machine whenever direction-control lever is moved to neutral or the decelerator is depressed to the detent
Parking	Exclusive spring-applied, hydraulically released park brake feature engages wet, multiple-disc brakes automatically whenever the engine stops, the operator depresses the decelerator pedal to the brake position, the unit is in neutral for 3 seconds (with detected motion), or the park-lock lever is in the park position; machine cannot be driven with brake applied, minimizing wearout or need for adjustment
<b>Hydraulics</b>	
Type	Open-center hydraulic system with fixed-displacement gear pump
Pump Displacement	26 cc
System Relief Pressure	20 684 kPa (3,000 psi)
Maximum Flow at Unloaded High Idle	57 L/m (15 gpm)
Control	3-function direct-acting T-bar joystick





<b>Electrical</b>	<b>650K XLT / 650K LGP</b>	
Voltage	24 volts	
Battery Capacity	950 CCA	
Reserve Capacity	190 min.	
Alternator Rating		
Cab	100 amp	
Canopy	100 amp	
Lights	Grille mounted (2), rear mounted (2), and rear reflectors (2)	
<b>Undercarriage</b>	<b>650K XLT</b>	<b>650K LGP</b>
<b>Blade Type</b>	<b>PAT</b>	<b>PAT</b>
<b>Tracks</b>	John Deere Dura Trax™ features large deep-heat-treated, sealed, and lubricated track links and through-hardened, sealed, and lubricated rollers for maximum wear resistance	
Track Gauge	1550 mm (61 in.)	1750 mm (69 in.)
Grouser Width	457 mm (18 in.)	711 mm (28 in.)
Chain	Sealed and lubricated	Sealed and lubricated
Shoes, Each Side	40	40
Track Rollers, Each Side	7	7
Track Length On Ground	2337 mm (92 in.)	2337 mm (92 in.)
Ground Contact Area	21 479 cm <sup>2</sup> (3,329 sq. in.)	33 412 cm <sup>2</sup> (5,179 sq. in.)
Ground Pressure	40.6 kPa (5.89 psi) standard / 41.4 kPa (6.00 psi) Maximum Life	27.5 kPa (3.98 psi) standard / 28.0 kPa (4.06 psi) Maximum Life
Track Pitch	171 mm (6.7 in.)	171 mm (6.7 in.)
<b>Operator Station</b>	<b>650K XLT / 650K LGP</b>	
ROPS (ISO 3471 – 2008) and FOPS (ISO 3449 – 2005)		
<b>Serviceability</b>		
<b>Refill Capacities</b>		
Fuel Tank with Lockable Cap	237 L (62.5 gal.)	
Cooling System with Recovery Tank	22.6 L (6.0 gal.)	
Engine Oil with Filter	19 L (20 qt.)	
Transmission Reservoir with Filter	55.6 L (14.7 gal.)	
Hydraulic Reservoir and Filter	34 L (9.0 gal.)	
<b>Operating Weights</b>	<b>650K XLT</b>	<b>650K LGP</b>
<b>Blade Type</b>	<b>PAT</b>	<b>PAT</b>
<i>Base Weight (with standard equipment, rollover protective structure [ROPS], full fuel tank, and 79-kg [175 lb.] operator)</i>	8890 kg (19,599 lb.)	9355 kg (20,624 lb.)
<b>Optional Components</b>		
Cab with Pressurizer and Heater/Air Conditioner	306 kg (675 lb.)	306 kg (675 lb.)
Heater (ROPS canopy)	39 kg (85 lb.)	39 kg (85 lb.)
Screens		
Front and Door	81 kg (179 lb.)	81 kg (179 lb.)
Rear	34 kg (76 lb.)	34 kg (76 lb.)
Side	43 kg (94 lb.)	43 kg (94 lb.)
Limb Risers (ROPS canopy and cab)	104 kg (229 lb.)	104 kg (229 lb.)
Counterweight		
Front	109 kg (240 lb.)	109 kg (240 lb.)
Rear	150 kg (330 lb.)	150 kg (330 lb.)
Retrieval Hitch	23 kg (50 lb.)	23 kg (50 lb.)
Drawbar, Extended Rigid	33 kg (72 lb.)	33 kg (72 lb.)
Winch	652 kg (1,437 lb.)	652 kg (1,437 lb.)
Fairlead, 4 Roller	85 kg (187 lb.)	85 kg (187 lb.)
Center Chain Guides	41 kg (90 lb.)	41 kg (90 lb.)
Full-Length Rock Guards	98 kg (216 lb.)	98 kg (216 lb.)
Maximum Life Undercarriage	182 kg (400 lb.)	182 kg (400 lb.)
Track Shoes		
457 mm (18 in.)	In base	—
510 mm (20 in.)	83 kg (183 lb.)	– 344 kg (– 760 lb.)
610 mm (24 in.)	—	– 172 kg (– 380 lb.)
710 mm (28 in.)	—	In base

**Machine Dimensions**

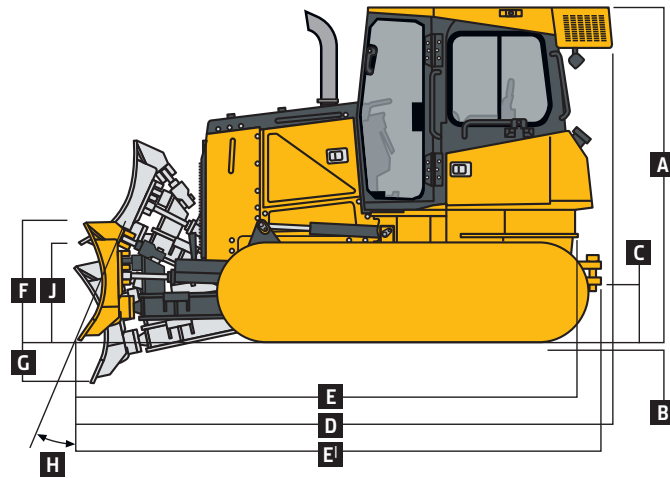
**Blade Type**

**650K XLT**

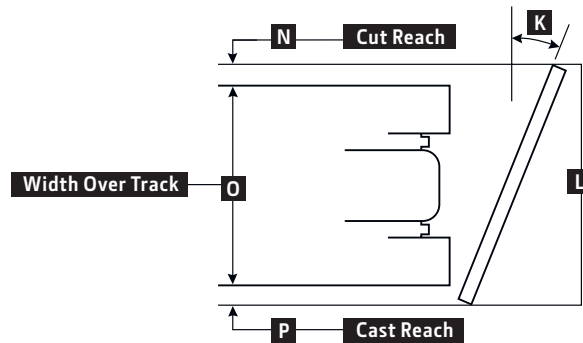
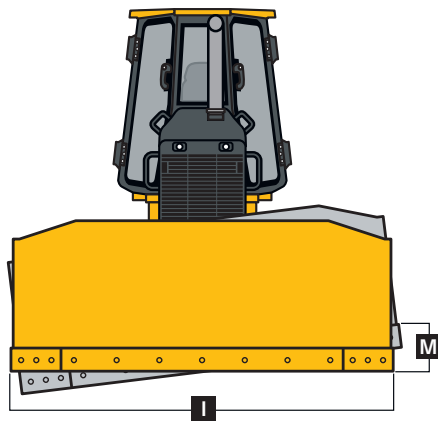
**PAT**

**650K LGP**

**PAT**



<b>A</b> Overall Height to Roof	2758 mm (9 ft. 1 in.)	2758 mm (9 ft. 1 in.)
<b>B</b> Tread Depth with Single-Bar Grouser	49 mm (1.9 in.)	49 mm (1.9 in.)
<b>C</b> Ground Clearance in Dirt	391 mm (15.4 in.)	391 mm (15.4 in.)
<b>D</b> Overall Length	4393 mm (14 ft. 4 in.)	4393 mm (14 ft. 4 in.)
<b>E</b> Length with Drawbar, Standard	4179 mm (13 ft. 9 in.)	4179 mm (13 ft. 9 in.)
<b>E'</b> Length with Drawbar, Extended	4235 mm (13 ft. 11 in.)	4235 mm (13 ft. 11 in.)
<b>F</b> Blade Lift Height	818 mm (32.2 in.)	818 mm (32.2 in.)
<b>G</b> Blade Digging Depth	500 mm (19.7 in.)	500 mm (19.7 in.)
<b>H</b> Blade Cutting-Edge Angle, Adjustable	52 to 60 deg.	52 to 60 deg.



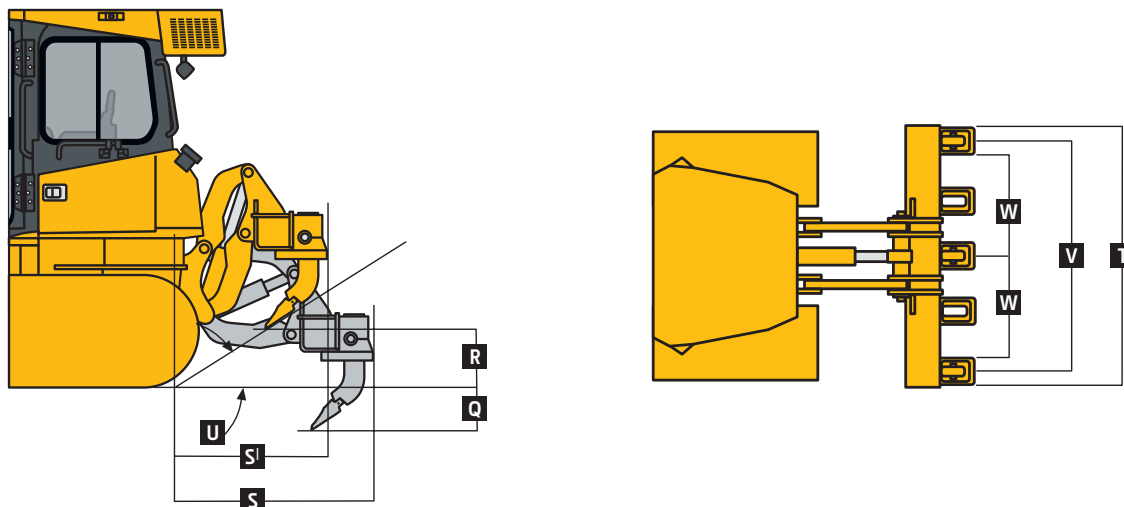
**Straight**

<b>I</b> Blade Width	2667 mm (105 in.)	2921 mm (115 in.)
<b>J</b> Blade Height	1067 mm (3 ft. 6 in.)	955 mm (3 ft. 2 in.)
SAE Capacity	2.2 m <sup>3</sup> (2.9 cu. yd.)	2.0 m <sup>3</sup> (2.6 cu. yd.)
Weight	603 kg (1,330 lb.)	628 kg (1,385 lb.)
C-Frame Assembly Weight (without blade)	399 kg (879 lb.)	399 kg (879 lb.)
<b>K</b> Blade Angle	22.2 deg.	22.2 deg.
<b>L</b> Overall Width with Blade Angled	2469 mm (8 ft. 1 in.)	2705 mm (8 ft. 11 in.)
<b>M</b> Blade Tilt (uses tilt jack)	363 mm (14.3 in.)	399 mm (15.7 in.)
<b>N</b> Cut Reach	117 mm (4.6 in.)	5 mm (0.2 in.)
<b>O</b> Width Over Track	2007 mm (6 ft. 7 in.)	2464 mm (8 ft. 1 in.)
<b>P</b> Cast Reach	345 mm (13.6 in.)	236 mm (9.3 in.)

**Straight (option)**

<b>I</b> Blade Width	2921 mm (115 in.)	3150 mm (124 in.)
<b>J</b> Blade Height	955 mm (3 ft. 2 in.)	894 mm (35 in.)
SAE Capacity	2.0 m <sup>3</sup> (2.6 cu. yd.)	1.9 m <sup>3</sup> (2.5 cu. yd.)
Weight	628 kg (1,385 lb.)	631 kg (1,391 lb.)
C-Frame Assembly Weight (without blade)	399 kg (879 lb.)	399 kg (879 lb.)
<b>K</b> Blade Angle	22.2 deg.	22.2 deg.
<b>L</b> Overall Width with Blade Angled	2705 mm (8 ft. 11 in.)	2916 mm (9 ft. 7 in.)
<b>M</b> Blade Tilt (uses tilt jack)	399 kg (879 lb.)	429 mm (16.9 in.)
<b>N</b> Cut Reach	233.68 mm (9.2 in.)	112 mm (4.4 in.)
<b>O</b> Width Over Track	2007 mm (6 ft. 7 in.)	2464 mm (8 ft. 1 in.)
<b>P</b> Cast Reach	465 mm (18.3 in.)	340 mm (13.4 in.)

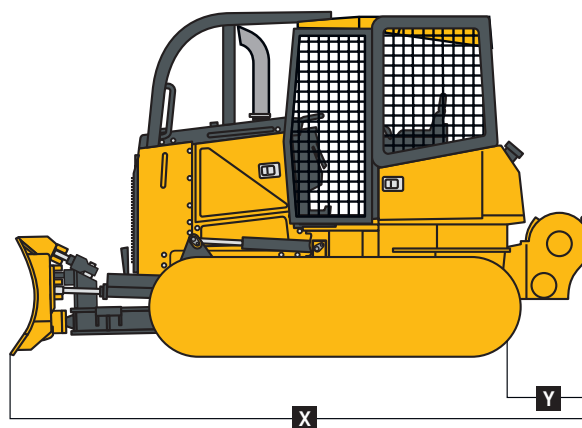
Machine Dimensions (continued)	650K XLT	650K LGP
<b>Blade Type</b>	<b>PAT</b>	<b>PAT</b>
<b>Straight (option)</b>		
I Blade Width	3150 mm (124 in.)	3251 mm (128 in.)
J Blade Height	894 mm (35 in.)	955 mm (3 ft. 2 in.)
SAE Capacity	1.9 m <sup>3</sup> (2.5 cu. yd.)	2.2 m <sup>3</sup> (2.9 cu. yd.)
Weight	631 kg (1,391 lb.)	694 kg (1,530 lb.)
C-Frame Assembly Weight (without blade)	399 kg (879 lb.)	399 kg (879 lb.)
K Blade Angle	22.2 deg.	22.2 deg.
L Overall Width with Blade Angled	2916 mm (9 ft. 7 in.)	3010 mm (9 ft. 11 in.)
M Blade Tilt (uses tilt jack)	429 mm (16.9 in.)	445 mm (17.5 in.)
N Cut Reach	340 mm (13.4 in.)	157 mm (6.2 in.)
O Width Over Track	2007 mm (6 ft. 7 in.)	2464 mm (8 ft. 1 in.)
P Cast Reach	569 mm (22.4 in.)	569 mm (22.4 in.)
<b>Rear Ripper</b>		
	<b>650K XLT / 650K LGP</b>	



Heavy-duty parallelogram ripper, 5 shank pockets with 3 teeth

Weight	981 kg (2,163 lb.)
Q Maximum Penetration	508 mm (20 in.)
R Maximum Clearance Under Tip	508 mm (20 in.)
S Overall Length, Lowered Position	1450 mm (57 in.)
S' Overall Length, Raised Position	1015 mm (40 in.)
T Overall Beam Width	1830 mm (6 ft. 0 in.)
U Slope Angle (full raise)	40 deg.
V Ripping Width	1670 mm (5 ft. 6 in.)
W Distance Between Shanks	806 mm (32 in.)

#### 4000S Winch



X Overall Length with Winch	4807 mm (15 ft. 9 in.)
Y Winch Length	660 mm (26 in.)