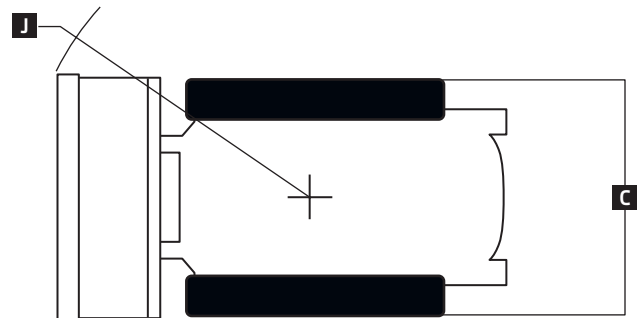
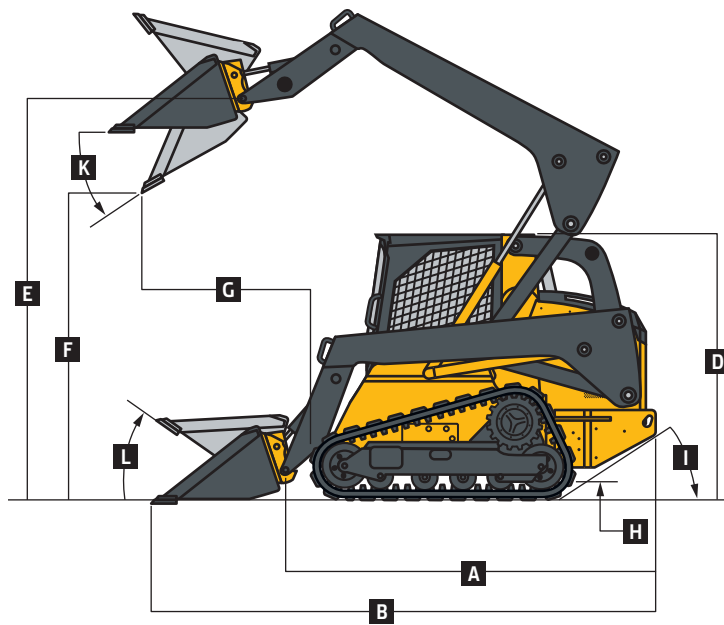


329E / 333E

Engine	329E	333E
Manufacturer and Model	Yanmar 4TNV94CHT	Yanmar 4TNV94CHT
Non-Road Emission Standards	EPA Interim Tier 4/EU Stage IIIB	EPA Interim Tier 4/EU Stage IIIB
Cylinders	4	4
Net Peak Power (SAE J1349 / ISO 9249)	62.0 kW (83 hp) at 2,500 rpm	72.0 kW (97 hp) at 2,500 rpm
Gross Rated Power (ISO 14396)	64.0 kW (86 hp) at 2,500 rpm	74.6 kW (100 hp) at 2,500 rpm
Peak Torque	360 Nm (266 ft.-lb.) at 1,700 rpm	395 Nm (291 ft.-lb.) at 1,700 rpm
Displacement	3.1 L (186.3 cu. in.)	3.1 L (186.3 cu. in.)
Rated Engine Speed	2,500 rpm	2,500 rpm
Torque Rise	47% at 1,700 rpm	39% at 1,700 rpm
Aspiration	Turbocharged, intercooled	Turbocharged, intercooled
Air Cleaner	Dry dual element	Dry dual element
Cooling	329E / 333E	
Fan Type	Variable-speed hydraulic drive (optional reversing fan drive)	
Powertrain	329E	333E
Pump	Axial-piston hydrostatic	Axial-piston hydrostatic
Controls	Electrohydraulic	Electrohydraulic
Travel Speeds		
Single Speed, Standard	10.0 km/h (6.2 mph)	—
2 Speed, Optional		
Low	8.5 km/h (5.3 mph)	8.5 km/h (5.3 mph)
High	12.6 km/h (7.8 mph)	12.6 km/h (7.8 mph)
Brakes	Integral, automatic, spring-applied, hydraulically released wet-disc brake	
Undercarriage	329E / 333E	
Rubber Tracks	Smooth-ride long-life rubber with steel inserts	Smooth-ride long-life rubber with steel inserts
Track Width		
Standard	400 mm (15.8 in.)	450 mm (17.7 in.)
Optional	450 mm (17.7 in.)	400 mm (15.8 in.)
Ground Pressure		
400-mm (15.8 in.) Track (standard on 329E, optional on 333E)	34.2 kPa (5.0 psi)	34.7 kPa (5.0 psi)
450-mm (17.7 in.) Track (optional on 329E, standard on 333E)	30.6 kPa (4.4 psi)	31.1 kPa (4.5 psi)
Track Rollers (per side)	5 triple-flange smooth-ride all-steel rollers	5 triple-flange smooth-ride all-steel rollers
Track Idlers (per side)	2 double-flange smooth-ride all-steel rollers	2 double-flange smooth-ride all-steel rollers
Bearings/Seals (rollers/idlers)	Heavy-duty journal bearings and metal face seals	Heavy-duty journal bearings and metal face seals
Tractive Effort	5221 kgf (11,500 lbf)	5221 kgf (11,500 lbf)
Hydraulics	329E / 333E	
Pump Flow		
Standard	80 L/m (21 gpm)	95 L/m (25 gpm)
Total with High-Flow Option	125 L/m (33 gpm)	129 L/m (34 gpm)
System Pressure at Couplers	23 787 kPa (3,450 psi)	23 787 kPa (3,450 psi)
Hydraulic Horsepower Flow (calculated)		
Standard	31.3 kW (42 hp)	37.3 kW (50 hp)
High	48.5 kW (65 hp)	50.0 kW (67 hp)
Cylinders	329E / 333E	
Type	John Deere heat-treated, chrome-plated, polished cylinder rods, hardened steel (replaceable bushings) pivot pins	
Electrical	329E / 333E	
Voltage	12 volt	
Battery Capacity	925 CCA	
Alternator Rating	70 amp	
Lights	Halogen, 2 front and 1 rear	
Operator's Station	329E / 333E	
	ROPS (ISO 3471) / FOPS (ISO 3449) structure with quick-pivot standard	



Serviceability	329E / 333E	
Refill Capacity		
Fuel Tank	96.5 L (25.5 gal.)	
Operating Weight	329E	333E
With Standard 400-mm (15.8 in.) Track	5221 kg (11,500 lb.)	—
With Standard 450-mm (17.7 in.) Track	—	5357 kg (11,800 lb.)
Machine Dimensions	329E / 333E	
A Length without Bucket	3.05 m (120 in.) (10 ft. 0 in.)	
B Length with Foundry Bucket	3.66 m (144 in.) (12 ft. 0 in.)	
C Width without Bucket		
With 400-mm (15.8 in.) Track	2.00 m (78.9 in.) (6 ft. 7 in.)	
With 450-mm (17.7 in.) Track	2.05 m (80.7 in.) (6 ft. 9 in.)	
D Height to Top of ROPS	2.15 m (84.7 in.) (7 ft. 1 in.)	
E Height to Hinge Pin	3.20 m (126 in.) (10 ft. 6 in.)	
F Dump Height with Foundry Bucket	2.59 m (101.8 in.) (8 ft. 6 in.)	
G Dump Reach		
With Foundry Bucket	0.82 m (32.2 in.)	
With Construction Bucket	1.00 m (39.4 in.) (3 ft. 3 in.)	
H Ground Clearance	0.26 m (10.4 in.)	
I Angle of Departure	31 deg.	
J Front Turn Radius with Foundry Bucket	2.17 m (85.43 in.) (7 ft. 1 in.)	
K Dump Angle (full lift height)	45 deg.	
L Bucket Rollback (ground level)	35 deg.	



Loader Performance	329E	333E
Tipping Load	3768 kg (8,300 lb.)	4279 kg (9,425 lb.)*
SAE Rated Operating Capacity with Foundry Bucket		
At 35% Tipping Load	1317 kg (2,900 lb.)	1498 kg (3,300 lb.)
At 50% Tipping Load	1884 kg (4,150 lb.)	2145 kg (4,725 lb.)
Boom Breakout	2088 kg (4,600 lb.)	2996 kg (6,600 lb.)
Bucket Breakout Force	4688 kg (10,325 lb.)	6299 kg (13,875 lb.)

*With 1 set of standard counterweights.