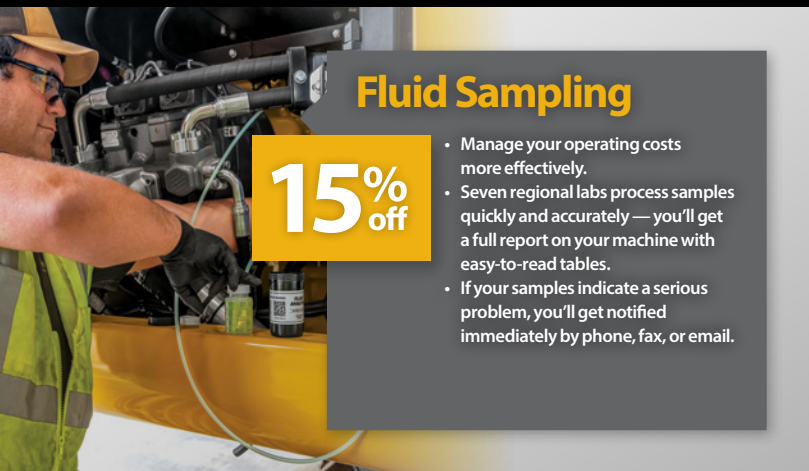


# VALUES

**MAY 2024**  
OFFERS EXPIRE MAY 31, 2024

**Brandt**



## Fluid Sampling

**15% off**

- Manage your operating costs more effectively.
- Seven regional labs process samples quickly and accurately — you'll get a full report on your machine with easy-to-read tables.
- If your samples indicate a serious problem, you'll get notified immediately by phone, fax, or email.

## Spring Deals on Pad Swaps

**SAVE UP TO \$800**  
at select locations

- Save on pad installations for a limited time
- Available for a wide range of makes and models
- All work completed by experienced, certified technicians using state of the art track press equipment
- Available at select branches only

Contact your local branch for a quote.



## Fleetguard Filters

- Meets OEM specifications to ensure engines and other systems get maximum life
- The widest range of air, lube, fuel and hydraulic filters in the heavy duty industry
- To register for the **Fleetguard Filter Rebate Program**, contact your local branch today

**Fleetguard**



## Ditch Witch® Pipe

**10% off**

Don't come up short this season.

- Available in lined and unlined Ditch Witch® thread
- Patented manufacturing process produces the strongest pipe available
- **Special pricing** on bulk quantities!

**Ditch Witch**



## Radius Bits

**10% off**

Rugged. Relentless. Radius.

- Bit heads are lined with carbide cutters for the toughest conditions
- Hard surfacing added to the length for high cutting power

**radius**  
TOOLS FOR PRO PROFESSIONALS







# Let Us Sweat the Small Stuff.

Special pricing on John Deere machine care inspections.

Keep your John Deere equipment running at peak performance with Brandt's machine care inspections. Our expert team of service technicians stands ready to assess every detail of your machines and recommend the right steps to maximize their efficiency. And for a limited time, we're offering special pricing on inspections to get your fleet ready for a productive, profitable construction season. Brandt delivers:

- ✓ Detailed visual walkaround inspections
- ✓ Verbal and written reports outlining all deficiencies
- ✓ Recommendations to bring the machine back to optimal performance
- ✓ Performance and diagnostic testing of all machine systems under load
- ✓ Complete fluid analysis (additional charge)

**10% off**  
PARTS WITH INSPECTION

See your local Brandt representative for details and pricing.

## Current stock for excavators

Parts available for all models and generations!

### Refurbished:

Rotary manifolds, hydraulic cylinders, final drives, and more...



### Used:

Cab assemblies, bucket pins, hydraulic cylinder parts, and more...



### Aftermarket:

Final drives, swing bearings, H-links, and more...



**1-877-685-4886**

E-mail: [usedparts@brandt.ca](mailto:usedparts@brandt.ca) / Inventory: [brandt.ca/ValueParts](http://brandt.ca/ValueParts)

**Value**  
**PARTS**